

## MTV-200 Thermal Imaging Camera

### Overview:

Marmonix MTV-200 is the third generation thermal imaging system product. With cutting-edge infrared technology, including high sensitivity IR detector (25µm pixel pitch, NETD<65mK) and ergonomic design, it is the ideal choice for professional thermographers to have the most efficient instrument for building diagnostics.

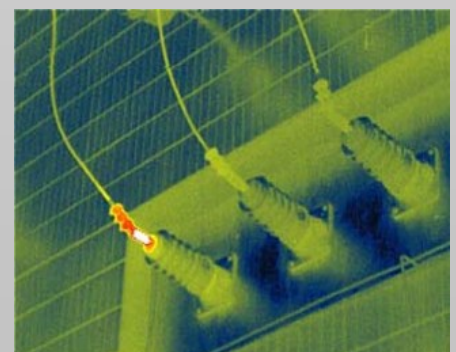
### Features:

- Excellent thermal image and high accuracy temperature measurement
- Folding and 270°rotatable display
- Auto/Motor focus for one-hand operation
- Bright LED light, Laser pointer
- Built-in digital camera
- Wide temperature measurement range
- Built-in microphone to record 40sec voice annotation
- Wide-angle and telephoto IR lens
- Scalable P-I-P and Thermal fusion
- Automatic Hot/Cold/Average temperature detection
- Real-time thermal video transfer to PC via USB, and remote transfer via MSN and Skype
- Intuitive and easy operating menu
- New generation analysis software



### Application:

- Building diagnostics
- Electrical and mechanical inspection
- Research & Development
- Automation applications
- Preventative & predictive maintenance



Detector Data	
Detector type	Uncooled FPA
IR resolution	160 x 120 pixels
Pixel pitch	25µm
Spectral range	8-14µm
Field of view (FOV)/min	21°x 16°/0.15m(standard lens)
focus distance	42°x 32°/0.1m (wide angle lens, optional) 10° x8° /1m (telephoto lens, optional)
Spatial resolution (IFOV)	2.3mrad( standard lens)
Thermal sensitivity NETD)	<50mk at 30°C
Image Presentation	
Image Display	3.2" 270° tiltable LCD
Image modes	Thermal image, visual image, thermal fusion, PIP, WIW, thumbnail gallery
Thermal fusion	IR image shown above, below or within temp interval on visual image
Picture in Picture	Resizable and movable IR area on visual image
Focus	Auto/Motor
Digital Zoom	1-4X Continuous
Visual camera	3 mega pixel
Spotlight	10cd/m2
Frequency	50Hz(PAL)/60Hz(NTSC)
Measurement	
Temperature range	-20°C to 250°C (standard) -20°C to 600°C (optional A) -20°C to 1200°C (optional B)
Accuracy	±2°C or ±2% of reading
Measurement spot	Up to 4 moveable spots
Measurement area	Up to 3 moveable boxes, automatically capture maximum, minimum, average temperature
Line profile	Vertical, horizontal
Isotherms analysis	Detect high/low temperature/interval
Hot/cold spot Auto detection	Max/Min/Average temp
Emissivity correction	Adjustable from 0.01 to 1.0
Temperature correction	Auto
Color palettes	Iron, anti-iron, feather red, black hot, white hot, medical
Set-up commands	Date/time, temperature units °C/°F/K, language, scale
Measuring Calibration	Automatic, based on inputs
Alarm	Voice and Color
Image Storage	
Storage type	4G SD card, Building-in flash
Storage Capacity	Up to700 images in built-in flash card Up to 11200 images in 4G SD card
Periodic image storage	user defined, 7seconds at least
Storage format	Standard JPEG, including measurement data
Laser Indication	
Classification type	Class 2, 1mW/635nm Red
Power System	
Battery	Li-ion, ≥3 hours operating time
Charging system	In camera or AC adapter
AC Supply	110 ~ 240V AC, 50/60Hz, 5V DC output
Voltage	5V ±5%
Power management	Automatic shutdown (user selectable)
Environment Data	
Operating temperature range	-20°C - +50°C
Storage temperature range	-40°C - +70°C
Humidity (operating and storage)	≤90%non-condensing
Shock	25G IEC68-2-29
IP Level	IP54
Vibration	2G IEC68-2-26
Physical Data	
Size (L x W x H)	128mm × 62mm × 154mm
Weight (with battery and standard lens)	410g
Size of screw nut on tripod	1/4 " -20
Interfaces	
USB	Images transfer to and from PC
Audio output	Yes
Video output	PAL / NTSC
Camera Includes	
Standard	Thermal imaging camera with standard IR lens, 2 Li-ion batteries, battery charger, adapter, Video cable, USB cable, Software CD, instruction, warranty card, transport case
Optional accessories	Li-ion battery, IR lens