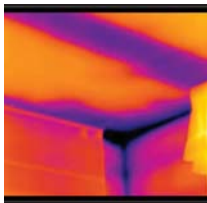


# E-Series InfraRed Camera (160 x 120 IR Resolution)

With Laser Pointer, 6 color palettes, and IR Window correction

- 0.1°C @ 30°C Thermal Sensitivity
- 3.5" Touch-Screen LCD Display
- Area Min/Max/Average with Auto Hot/Cold Spot Marker
- Stores >1000 JPEG Images
- IR Window Correction



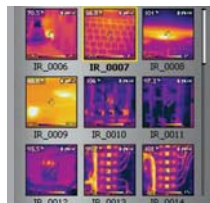
Large 3.5" Display



Built-in Laser Pointer



Memory Card Reader



Thumbnail Image Gallery

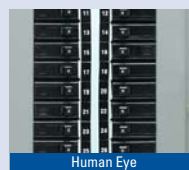


## FLIR E30 Features

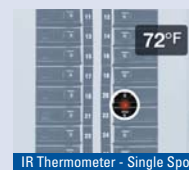
- **High Resolution IR Images** — 19,200 pixels (160 x 120) Infrared resolution
- **Wide Temperature Range** — From -4 to 482°F (-20 to 250°C) targeting electrical and mechanical applications
- **± 2% Accuracy** — reliable temperature measurement
- **Thumbnail Image Gallery** — Allows quick search of stored images
- **Li-Ion Rechargeable Battery** — lasts >4hrs continuous use; replaceable
- **Laser LocatIR™ Pointer** — Pinpoints a reference spot with a laser
- **IR Window Correction** — Firmware settings allow you to account for transmission loss through IR windows
- **Area (Min/Max/Average) Mode** — Shows the Minimum, Maximum or Average Temperature reading within the selected area
- **Auto Hot/Cold Spot Marker** — Marks the area that automatically finds the hottest or coldest spot within the box
- **Includes** — Memory Card (stores >1000 Radiometric JPEG images), Li-Ion rechargeable battery, power supply, USB cable, video cable, hand strap, camera lens cap, hard case, and FLIR Tools software CD-ROM



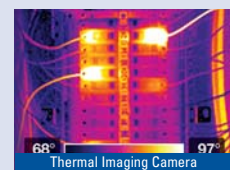
Warranty extended to 2 years when the camera is registered



Human Eye



IR Thermometer - Single Spot



Thermal Imaging Camera

### Why Thermal Imaging?

While spot IR thermometers present only a single temperature at a single spot, these Thermal Imaging Cameras give you the whole picture, equal up to 19,200 spots! Thermal imaging is the most effective method for finding problems or potential problems in a variety of applications across many fields. If you are new to Thermography and need a general purpose Thermal Imaging Camera for troubleshooting, the FLIR E-Series is perfect for you! They are fully loaded with Thermal Imaging functions at a fraction of the price of a Professional grade camera. They come complete in a hard carrying transport case.



### The Difference is Training

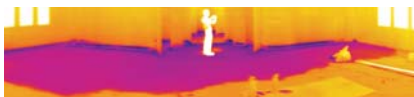
Get the most out of your FLIR IR camera investment with world-class instruction through the Infrared Training Center (ITC), the largest infrared applications training organization in the world. The ITC's Level 1 Infrared Thermography Training Course is geared to the new infrared camera user and focuses on its use for a variety of condition monitoring/predictive maintenance applications. Level 2 and Level 3 certificate courses for more advanced infrared training are also available. Courses are taught by certified instructors with extensive experience in a wide variety of infrared thermography and thermal imaging applications. ITC certifications are recognized by major professional organizations.

### Software Packages

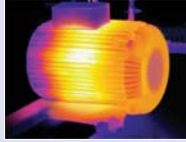
**FLIR Reporter** is a powerful software for creating compelling and professional, fully customized, easy-to-interpret reports in a standard MS Word Document. You can create a report by simply Dragging and Dropping your images on a desktop icon or using the Wizards to guide you step-by-step through the process. The saved document is a 'live' report with full access to the analysis tools and temperature measurement data. The reports can be multi-page and include all of your IR inspection data -infrared and visual images, temperature measurements, voice comments and text notes.

**FLIR BuildIR Software** package specifically designed to carry out advanced analysis of building structures. It is used to analyze images taken with an infrared camera, and create inspection reports based on these images.

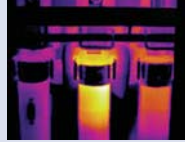
**Panorama Function** allows you to conveniently piece together normal sized images to create one large image for a wide angle view of the area being measured by using FLIR BuildIR or Reporter Software package



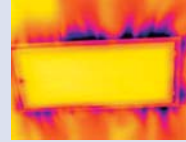
## Applications



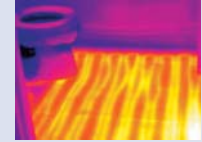
Motor - Internal Winding Problem



Electrical - Hot Fuses



HVAC - Energy Loss



Building Inspection - Radiant Floor

## FLIR E30 Specifications

### Features

Temperature range	-4°F to 482°F (-20°C to 250°C)
Image Storage	>1000 radiometric JPEG images (SD card memory)

### Imaging Performance / Image Presentation

Frame Rate	60Hz
Field of view/min focus distance	25° x 19°/1.31ft (0.4m)
Focus	Manual (Minimum focus distance 1.3ft/0.4m)
Thermal sensitivity (N.E.T.D)	<0.1°C at 30°C
Detector Type - Focal plane array (FPA) uncooled microbolometer	160 x 120 pixels
Spectral range	7.5 to 13µm
Display	Built-in 3.5" color LCD
Image modes	Thermal/Thumbnail Gallery
Laser Classification/Type	Class 2/Semiconductor AlGaInP Diode Laser: 1mW/635nm (red)
Set-up controls	Mode selector, color palettes, configure info to be shown in image, local adaptation of units, language, date and time formats, and image gallery
Measurement modes	Spotmeter (movable), Area Box (full image with min/max/average), Auto hot/cold spot, Isotherm (above/below/interval)
Video Output	Composite
Radiometric IR Video Streaming	To PC using USB
Measurement correction	Reflected ambient temperature & emissivity correction
Battery Type/operating time	Li-Ion/ >4 hours, Display shows battery status
Charging system	In camera AC adapter/2 bay charging system
Shock	25G, IEC 68-2-29
Vibration	2G, IEC 68-2-6
Dimensions/Weight	9.7x3.8x7.2" (246x97x184mm)/<1.82lbs (825g), including battery
Warranty	2 years (Warranty extended to 2 years when the camera is registered)

## Ordering Information

### Part Number

49001-1601 .....FLIR E30 Thermal Imaging InfraRed Camera (160x120)

### ACCESSORIES

T197752	Li-Ion Rechargeable Battery
T910814	AC Adapter Charger (110-240V, U.S. Plug)
T196497	Cigarette Lighter Adapter Kit, 12VDC (1.2m cable)
T197910	2-Bay Battery Charger including Power Supply (multi plugs)
T197717	FLIR Reporter Professional Analysis Software
T197778	BuildIR Software package
T197965	FLIR Tools Software package
1196961	15° Telephoto Lens
1196960	45° Wide Angle Lens

### CERTIFICATION TRAINING

ITC LEVEL I .....ITC Level I Certification Training per attendee

Distributed by:

**All-Spec Industries**  
5228 US Hwy 421 N  
Wilmington, NC 28401

[www.all-spec.com](http://www.all-spec.com)  
[sales@all-spec.com](mailto:sales@all-spec.com)

PH: 800-537-0351  
FX: 800-379-9903

**EXTECH**<sup>®</sup>  
INSTRUMENTS  
A FLIR COMPANY