

FLIR K-SERIES

Handheld thermal imaging
cameras for firefighting

Fire attack

Search & rescue

Situational awareness

Hot spot identification



The World's **Sixth Sense**®

Like the vital protective gear you wear and tools you carry, a thermal imaging camera has become essential firefighting equipment.

Imagine if everyone on the crew could pack a TIC to help them maneuver more safely, attack fires more strategically, and save lives. With FLIR K-Series and the new K2, a TIC for every firefighter is now more feasible than ever before.

Model	FLIR K2	FLIR K45	FLIR K55	FLIR K65
IR Resolution	160 x 120 pixels	240 x 180 pixels	320 x 240 pixels	
Contrast optimization	MSX	Digital image enhancement using FSX		
Sensitivity (NETD)	< 100 mK @ +86°F	< 40 mK @ +86°F	< 30 mK @ +86°F	
NFPA Compliant		-		✓



FLIR IN-TRUCK CHARGER

Easy to mount, the optional in-truck charger for the K45, K55, and K65 secures the camera while recharging its onboard battery and a spare simultaneously so they're ready to grab and go.

Optional accessories

- Extra battery
- Battery charger
- Hard case
- Retractable lanyard
- Strap lanyard
- Neck strap
- USB-cable
- Tripod adapter
- In-truck charger

NFPA 1801:2013 COMPLIANT (K65)

The K65 camera connectors (left) are fully sealed and the battery (right) can be secured with the screw.





FSX™ - FLEXIBLE SCENE ENHANCEMENT
 Details in the thermal image are enhanced through digital image processing inside the camera. The result is an ultra-sharp thermal image that shows more detail. FSX makes it easier for firefighters to find their way in smoke filled rooms. Even in scenes with extreme temperature dynamics that are typical for a firefighting environment.



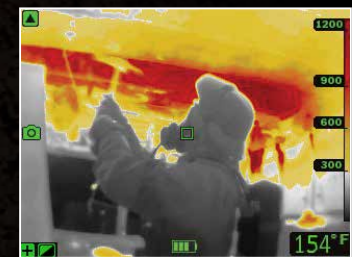
For initial fire attack and life rescuing operations.

BLACK AND WHITE FIRE FIGHTING



Same as the TI Basic mode but a grey scale image.

FIRE



For use in context with higher background temperatures where a lot of open flames are present, particularly in structural fires.

SEARCH & RESCUE



For use with lower temperature situations, such as initial rescue efforts after traffic accidents, searches in wooded landscapes, etc.

HEAT DETECTION



Used for finding hotspots. The hottest 20% of the scene is colored in red.

FLIR K-SERIES FEATURES

So affordable, now more fire trucks and firefighters can carry one

FLIR develops and manufactures more thermal imaging cameras than any other company. This integrated capability allows us to offer the K-Series at an extremely affordable price to help you stretch your department's budget.

Clear and crisp thermal images

The maintenance-free uncooled IR sensor and FSX enhancement produces detail-rich thermal images at 320 x 240 pixels (K65 and K55) or 240 x 180 pixels (K45), brightly displayed on the large 4" K-Series LCD, helping you navigate better and expedite critical decisions.

Rugged & reliable

K-Series TICs are designed to withstand the toughest firefighting conditions. They can take a 2-meter drop onto a concrete floor, are water resistant (IP67), and remain fully operational up to +500°F (5 minute duration). The K65 complies fully with the NFPA 1801 2013 standard for firefighting thermal imaging cameras.

Produce simple reports

Save up to 200 thermal images to the internal memory of the K45, K55, and K65. Review them later from the camera or export them and create a report to recap what happened at the scene.

Easy to use, even with gloves on

3 large buttons on the K45, K55, and K65 provide quick access to the intuitive and simple K-Series user interface so you can stay focused on the challenging and fast-changing job at hand.

In-Camera video storage (K55 & K65)

The K55 and K65 can record 200 thermal video clips (up to 5 minutes each) that you can replay on the camera LCD or export for future reference – ideal for onsite review and for training purposes.



FLIR K2

A TIC for Every Firefighter that Saves More than Just Money

So Every Firefighter Goes Home

FLIR is on a mission to make thermal imaging cameras standard issue equipment. Not just one TIC for every truck, but for each crew member in it.

Without sacrificing capability, ruggedness or reliability, the K2's \$1,295 price tag makes that more possible than ever. But extreme affordability is just one benefit.

Multi-spectral dynamic imaging (MSX®)

The K2 uses FLIR's patented MSX technology that embosses key details from the built-in visible camera onto thermal images, providing you with the extra perspective to help you stay oriented and safer while saving others.

Compact and easy to use

FLIR K2's compact design makes it light and easy to attach to turnouts. And a single large button makes the camera simple to activate even with heavy gloves on so you can start seeing your way through dark, smoky conditions immediately.

Rugged & reliable

Engineered to survive tough operating conditions, the K2 withstands a 2-meter drop onto concrete, is water resistant (IP67) and is fully operational up to +500°F (for up to 3 minutes).

Multiple image modes

FLIR K2 can be set to one of seven different thermal imaging modes depending on the primary use of the camera. Switch between them using FLIR Tools software that you can download free from www.flir.com.

Multiple firefighting applications

Fire up the K2 as soon as you arrive on scene for the 360 size-up. Take it inside to see your way through smoke, keep track of others, and determine where to focus fire attack efforts. Find stranded victims faster. And scan for hot spots during overhaul.

A new level of affordability

The K2's economical price makes powerful thermal imaging more accessible to more firefighters – a small investment that can help pay big dividends when it comes to safety, saving lives, and protecting property.



www.flir.com
NASDAQ: FLIR

Equipment described herein may require US Government authorization for export purposes. Diversion contrary to US law is prohibited. Imagery for illustration purposes only. Specifications are subject to change without notice. ©2015 FLIR Systems, Inc. All rights reserved. 03/16



The World's **Sixth Sense**®