

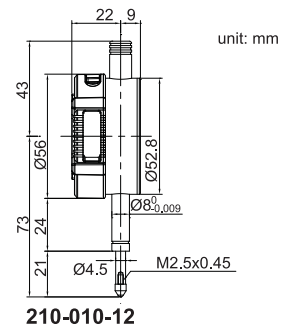
SERIES 210

DIGITAL INDICATOR

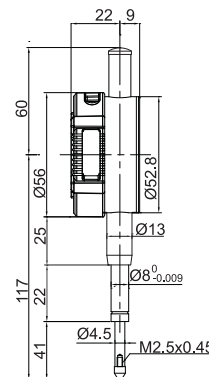
- ◆ Resolution: 0.01mm/0.0005"
- ◆ Button: tolerance set, data preset, inch/mm conversion, measuring direction set, max./min./range measurement, absolute/incremental measurement
- ◆ Data output



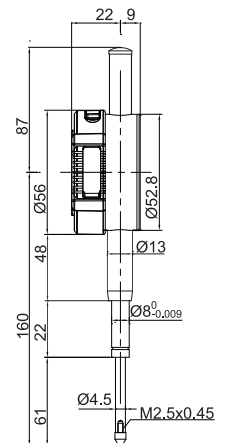
210-010-12



210-010-12



210-025-12



210-050-12

Code	Range	Back	Accuracy	Hysteresis
210-010-11	12.7mm/0.5"	lug	20μm	10μm
210-025-11	25.4mm/1"	lug	20μm	10μm
210-050-11	50.8mm/2"	lug	30μm	10μm
210-010-12	12.7mm/0.5"	flat	20μm	10μm
210-025-12	25.4mm/1"	flat	20μm	10μm
210-050-12	50.8mm/2"	flat	30μm	10μm

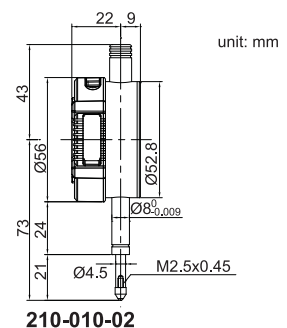
SERIES 210

DIGITAL INDICATOR

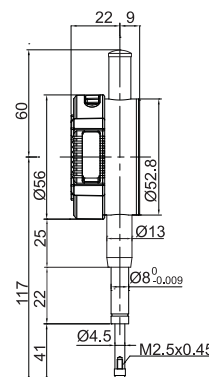
- ◆ Resolution: 0.001mm/0.00005"
- ◆ Button: tolerance set, data preset, inch/mm conversion, measuring direction set, max./min./range measurement, absolute/incremental measurement
- ◆ Data output



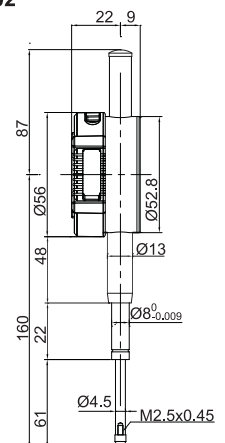
210-010-02



210-010-02



210-025-02



210-050-02

Code	Range	Back	Accuracy	Hysteresis
210-010-01	12.7mm/0.5"	lug	5μm	2μm
210-025-01	25.4mm/1"	lug	5μm	3μm
210-050-01	50.8mm/2"	lug	6μm	3μm
210-010-02	12.7mm/0.5"	flat	5μm	2μm
210-025-02	25.4mm/1"	flat	5μm	3μm
210-050-02	50.8mm/2"	flat	6μm	3μm