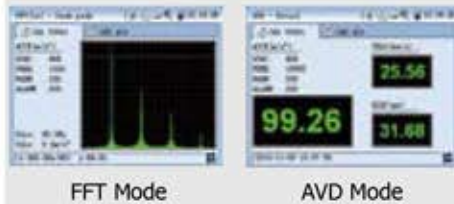


# TIME<sup>®</sup>7240

VIBRATION TESTER



### Standard Delivery

- Main unit 1
- Vibration probe TSV-03 1
- Magnetic base 1
- Protection sheath for main unit 1
- Power adapter 1
- USB communication 1
- SD memory card(2G) 1
- TIME certificate 1
- Warranty card 1
- Instruction manual 1

### Optional Accessory

- Photoelectric keyphasor transducer
- RS232 cable(for printing)
- TPUP-n H thermal printer
- n needle groupware

### Features

- Three channels(CH1, CH2 and REV) available, the vibration of any two of the three directions(including X axis, y axis and Z axis)can be tested.
- Five measuring modes: three parameters measuring (AVD mode), dynamic time domain waveform (TIME mode), dynamic spectrum measurement (FFT mode), data sampling (Sample mode), rotation speed measurement (REV mode).
- The peak value of acceleration, velocity and peak to peak value of displacement are measured.
- Preset the filter's cut-off frequency of pass band, frequency up to 100Hz.
- Dynamic display the vibration frequency and waveform in real time.
- Continuous data sampling last for 20 seconds
- Powerful data memory management: up to 50 points' infinite data, the measured data of each point is stored in files, users can review the vibration parameters, waveform, frequency data sampling and rotation speed.
- Connected with printer to print out measured data, waveform and spectrum chart.
- Photoelectric transducer for high accurate rotation speed
- Self-diagnosis for malfunction: Alarm sets off if test results out of warning line
- Safe and reliable long-life Li battery with self-protect equipment
- Color LCD display, auto shutdown and buzz alarming



### Technical Specification

Sensitivity of Acceleration transducer (mVrms/g)	Acceleration (m/s <sup>2</sup> )	Velocity(mm/s)	Displacement(μm)
1.0~9.9	1-2,000	1-2,000	10-20,000
10~99	0.2-200	0.2-200	5-2000
Frequency range	Acceleration: 5Hz~10000Hz		
	Velocity: 5Hz~1000Hz		
	Displacement: 5Hz~500Hz		
Rotation Speed	300~60000RPM		
Tolerance	±5%		
Battery	Li battery(continuous working for 8hours)		
Operating temperature	0℃ ~40℃		
Humidity	≤80%RH		
Dimensions (mm)	223×122×38		
Weight (g)	606		