

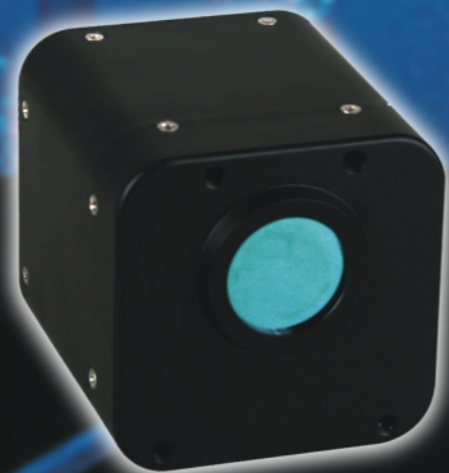
NV628

Built-in night vision safety enhancement system

Surveys show that the distance or time spent driving during the night takes up only 28% of total driving; however, the death rate caused by accidents occurring during night driving takes up 55% of the whole death rate.

With concerns for the safety of lives, SATIR has lately launched a new night vision system for night driving, which greatly enhances the safety of night driving, establishing another milestone for night driving safety technology.

By simply turning on the power, the night vision system will start up. With the LCD display, drivers can see obstacles 300 meters away, so the driver can recognize the road, pedestrians, motorcyclists, and other obstacles etc. This night vision system can also reduce the stress brought about by exhausting night time driving, enabling the driver to keep alert and take proper actions to respond to emergencies.



- High resolution, high imaging quality
- Powered by Cigarette lighter power
- Wide angle lens for better field of view
- Compact design, 400g only

Observation distance	800m (for vehicle)
FOV/focusing distance	28°x 21°/ 3m
MRTD	1.27 mrad
Detector	UFPA, microbolometer
Resolution	384 x 288
Wavelength	8-14um
LCD display	7" TFT LCD Display (optional)
Video output	PAL(50Hz) / NTSC (60Hz)
Power supply	12V 3A, cigarette lighter connector
Encapsulation	IP65/69
Shock	25G
Vibration	2G
Weight	400g
Size (camera body) (L*W*H)	80 mm x 57.5mm x 57.5mm



Detection distance in actual situation may vary, depending on the environmental situation; SATIR will not be responsible or liable for any problem or accident caused by the use of the night vision system or the errors in the judgments to the thermal images.

NV618

Detachable night vision safety enhancement system

- High resolution, high imaging quality
- Portable design, can be mounted on different automobiles
- Easy to install or remove
- Powered by Cigarette lighter power
- Wide angle lens for better field of view
- Compact design



Observation distance	800m (for vehicle)
FOV/focusing distance	28°x 21°/ 3m
MRTD	1.27 mrad
Detector	UFPA, microbolometer
Resolution	384 x 288
Wavelength	8-14um
LCD display	7" TFT LCD Display (optional)
Video output	PAL(50Hz) / NTSC (60Hz)
Power supply	12V 3A, cigarette lighter connector
Encapsulation	IP65/69
Shock	25G
Vibration	2G
Weight	850g
Size (camera body) (L*W*H)	140 mm x 110mm x 110mm



Far Infrared Night Vision Enhance System (NV618/NV628)



patented product, imitation forbidden